



Lantech

Pioneering Industrial and IP Networks

LantechView Device Topology





Sort Devices By:

- Lantech-VIEW
 - Devices (3)
 - All Devices
 - (192.168.16.1, 00:0F:38:03:4A:84)
 - (192.168.16.3, 00:1E:94:23:00:7F)
 - (192.168.16.2, 00:0F:38:03:4A:7D)
 - Status Monitor
 - Syslog Events
 - Wizards
 - Group IP Setting
 - Group Firmware Update

All Functions:

- System
 - System Information
 - IP Configuration
 - DHCP Server
 - TFTP Transaction
 - System Event Log
 - Syslog Configuration
 - Syslog Table
 - SMTP Configuration
 - Event Configuration
 - Fault Relay Alarm
 - Time (SNTP)
 - IP Security
 - User Authentication
- Port
- Protocol
- Security
 - Factory Default
 - Save To Flash
 - Reboot

192.168.16.1
00:0F:38:03:4A:84

Status

- Online/Offline
- Query Failure
- IP different
- Device Fault
- * Red as Error

Syslog

Num: 5

Unread: 3

Last: 2009/4/22 17:08:13

Mode:

Server IP Address:



Sort Devices By: None

- [-] Lantech-VIEW
 - [-] Devices (3)
 - [-] All Devices
 - (192.168.16.1, 00:0F:38:03:4A:84)
 - (192.168.16.3, 00:1E:94:23:00:7F)
 - (192.168.16.2, 00:0F:38:03:4A:7D)
 - Status Monitor
 - Syslog Events
 - Wizards
 - Group IP Setting
 - Group Firmware Update

- All Functions:
- [-] System
 - System Information
 - IP Configuration
 - [-] DHCP Server
 - [-] TFTP Transaction
 - [-] System Event Log
 - Syslog Configuration
 - Syslog Table
 - SMTP Configuration
 - Event Configuration
 - Fault Relay Alarm
 - Time (SNTP)
 - IP Security
 - User Authentication
 - [-] Port
 - [-] Protocol
 - [-] Security
 - Factory Default
 - Save To Flash
 - Reboot

192.168.16.1
00:0F:38:03:4A:84

Status

- Online/Offline
- Query Failure
- IP different
- Device Fault
- * Red as Error

Syslog

Num: 5

Unread: 3

Last: 2009/4/22 17:08:13

System Event:

Event	Syslog	SMTP
Device cold start	Disable	Disable
Device warm start	Disable	Disable
Authentication Failure	Disable	Disable
X-Ring Topology Change	Enable	Disable

Syslog: Enable

SMTP: Disable

Port Event:

Port No.	Syslog	SMTP
Port.01	Link Up & Down	Disable
Port.02	Link Up & Down	Disable
Port.03	Disable	Disable
Port.04	Disable	Disable
Port.05	Disable	Disable
Port.06	Disable	Disable
Port.07	Disable	Disable
Port.08	Disable	Disable
Port.09	Disable	Disable
Port.10	Disable	Disable

Syslog Link Up & Down

SMTP: Disable

✔ Apply

Discovery Discovery Filter Login Logout Reboot Open Web Refresh Refresh All Group IP Wizard Group Firmware Wizard Devices Topology About

Sort Devices By: None

- Lantech-VIEW
 - Devices (3)
 - All Devices
 - (192.168.16.1, 00:0F:38:03:4A:84)
 - (192.168.16.3, 00:1E:94:23:00:7F)
 - (192.168.16.2, 00:0F:38:03:4A:7D)
 - Status Monitor
 - Syslog Events
 - Wizards
 - Group IP Setting
 - Group Firmware Update

All Functions:

- System
 - System Information
 - IP Configuration
 - DHCP Server
 - TFTP Transaction
 - System Event Log
 - Syslog Configuration
 - Syslog Table
 - SMTP Configuration
 - Event Configuration
 - Fault Relay Alarm
 - Time (SNTP)
 - IP Security
 - User Authentication
- Port
- Protocol
 - Vlan
 - RSTP
 - SNMP
 - Qos Mode
 - IGMP Snooping
 - X-Ring
 - LLDP
- Security
 - Factory Default
 - Save To Flash
 - Reboot

192.168.16.1
00:0F:38:03:4A:84

Status

- Online/Offline
- Query Failure
- IP different
- Device Fault
- * Red as Error

Syslog

Num: 5

Unread: 3

Last: 2009/4/22 17:08:13

Enable Ring

Enable Ring Master

1st Ring Port: Port.01 FORWARDING

2nd Ring Port: Port.02 BLOCKING

Coupling Ring

Coupling Port: Port.01 FORWARDING

Control Port: Port.01 FORWARDING

Dual Homing

Homing Port: Port.01 FORWARDING

Enable Dual Ring

1st Ring Port: Port.01 FORWARDING

2nd Ring Port: Port.01 FORWARDING

Apply



Sort Devices By:

- Lantech-VIEW
 - Devices (3)
 - All Devices
 - (192.168.16.1, 00:0F:38:03:4A:84)
 - (192.168.16.3, 00:1E:94:23:00:7F)
 - (192.168.16.2, 00:0F:38:03:4A:7D)
 - Status Monitor
 - Syslog Events
 - Wizards
 - Group IP Setting
 - Group Firmware Update

All Functions:

- System
 - System Information
 - IP Configuration
 - DHCP Server
 - TFTP Transaction
 - System Event Log
 - Syslog Configuration
 - Syslog Table
 - SMTP Configuration
 - Event Configuration
 - Fault Relay Alarm
 - Time (SNTP)
 - IP Security
 - User Authentication
- Port
- Protocol
 - Vlan
 - RSTP
 - SNMP
 - Qos Mode
 - IGMP Snooping
 - X-Ring
 - LLDP
- Security
 - Factory Default
 - Save To Flash
 - Reboot

192.168.16.1
00:0F:38:03:4A:84

Status

- Online/Offline
- Query Failure
- IP different
- Device Fault

* Red as Error

Syslog

Num: 5

Unread: 3

Last: 2009/4/22 17:08:13

LLDP Protocol:

Interval: (sec)

Apply



Sort Devices By: None

- Lantech-VIEW
 - Devices (3)
 - All Devices
 - (192.168.16.1, 00:0F:38:03:4A:84)
 - (192.168.16.3, 00:1E:94:23:00:7F)
 - (192.168.16.2, 00:0F:38:03:4A:7D)
 - Status Monitor
 - Syslog Events
 - Wizards
 - Group IP Setting
 - Group Firmware Update

- All Functions:
- Basics
 - Port Configuration
 - Redundancy
 - Fast Recovery Mode
 - Redundant Ring
 - RSTP Settings
 - Traffic Prioritization
 - VLAN
 - SNMP
 - Security
 - Warning
 - Monitor And Diagnostic
 - POE
 - Save To Flash

192.168.16.3
00:1E:94:23:00:7F

Status

- Online/Offline
- Query Failure
- IP different
- Device Fault
- * Red as Error

Syslog

Num: 0

Unread: 0

Last:

Redundant Ring

Ring Master

1st Ring Port: Port.01

2nd Ring Port: Port.02

Coupling Ring

Coupling Port: Port.01

Dual Homing

Homing Port: Port.01

Apply

Discovery Discovery Filter Login Logout Reboot Open Web Refresh Refresh All Group IP Wizard Group Firmware Wizard Devices Topology About

Sort Devices By: None

- Lantech-VIEW
 - Devices (3)
 - All Devices
 - (192.168.16.1, 00:0F:38:03:4A:84)
 - (192.168.16.3, 00:1E:94:23:00:7F)
 - (192.168.16.2, 00:0F:38:03:4A:7D)
 - Status Monitor
 - Syslog Events
 - Wizards
 - Group IP Setting
 - Group Firmware Update

- All Functions:
- Basics
 - Port Configuration
 - Redundancy
 - Fast Recovery Mode
 - Redundant Ring
 - RSTP Settings
 - RSTP Information
 - Traffic Prioritization
 - VLAN
 - SNMP
 - Security
 - Warning
 - Monitor And Diagnostic
 - MAC Address Table
 - Port Statistics
 - Port Mirroring
 - System Event Log
 - LLDP
 - POE
 - Save To Flash

192.168.16.3
00:1E:94:23:00:7F

Status:
Online/Offline
Query Failure
IP different
Device Fault
* Red as Error

Syslog:
Num: 0
Unread: 0
Last:

LLDP Protocol: Enable
Interval: 1 (sec)

Apply

Topology View - Limited for 10 devices only

File Task Management Help

Find Go Device Label Ip

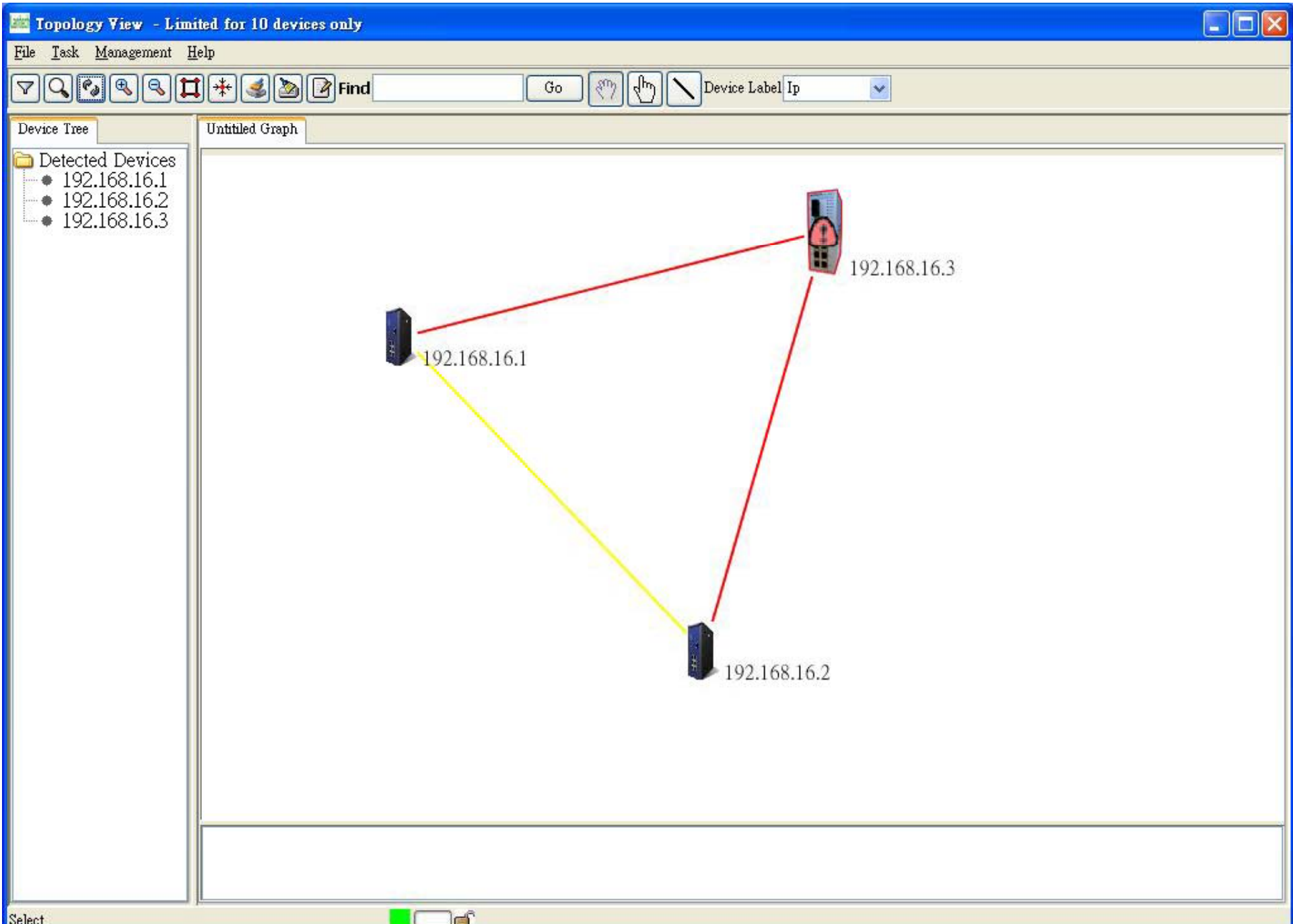
Device Tree

- Detected Devices
 - 192.168.16.1
 - 192.168.16.2
 - 192.168.16.3

Untitled Graph

```
graph TD; 192.168.16.1 --- 192.168.16.2; 192.168.16.1 --- 192.168.16.3; 192.168.16.2 --- 192.168.16.3;
```

Select





Sort Devices By: None

- Lantech-VIEW
 - Devices (3)
 - All Devices
 - (192.168.16.1, 00:0F:38:03:4A:84)
 - (192.168.16.3, 00:1E:94:23:00:7F)
 - (192.168.16.2, 00:0F:38:03:4A:7D)
 - Status Monitor
 - Syslog Events
 - Wizards
 - Group IP Setting
 - Group Firmware Update

- All Functions:
- System
 - System Information
 - IP Configuration
 - DHCP Server
 - TFTP Transaction
 - System Event Log
 - Syslog Configuration
 - Syslog Table
 - SMTP Configuration
 - Event Configuration
 - Fault Relay Alarm
 - Time (SNTP)
 - IP Security
 - User Authentication
 - Port
 - Protocol
 - Security
 - Factory Default
 - Save To Flash
 - Reboot

192.168.16.1
00:0F:38:03:4A:84

Status

- Online/Offline
- Query Failure
- IP different
- Device Fault
- * Red as Error

Syslog

Num: 6

Unread: 0

Last: 2009/4/22 17:17:32

View Page: Page.01

- Jan 1 07:13:44: Port.01: Link Down!
- Jan 1 07:13:43: X-Ring Topology Change!
- Jan 1 07:04:31: X-Ring Topology Change!
- Jan 1 07:04:29: Port.01: Link Up!
- Jan 1 07:04:18: Port.01: Link Down!
- Jan 1 07:04:18: X-Ring Topology Change!
- Jan 1 07:04:16: X-Ring Topology Change!
- Jan 1 07:04:12: X-Ring Topology Change!
- Jan 1 07:03:24: X-Ring Topology Change!
- Jan 1 07:03:22: X-Ring Topology Change!
- Jan 1 07:02:16: X-Ring Topology Change!
- Jan 1 07:02:14: X-Ring Topology Change!
- Jan 1 07:02:14: X-Ring Topology Change!
- Jan 1 07:02:07: X-Ring Topology Change!
- Jan 1 07:01:50: X-Ring Topology Change!
- Jan 1 07:01:48: X-Ring Topology Change!
- Jan 1 06:28:27: System Log Server IP: 192.168.16.10
- Jan 1 06:28:27: System Log Enable!

Clear



Sort Devices By: None

- [-] Lantech-VIEW
 - [-] Devices (3)
 - [-] All Devices
 - (192.168.16.1, 00:0F:38:03:4A:84)
 - (192.168.16.3, 00:1E:94:23:00:7F)
 - (192.168.16.2, 00:0F:38:03:4A:7D)
 - Status Monitor
 - Syslog Events
 - Wizards
 - Group IP Setting
 - Group Firmware Update

- All Functions:
- [-] System
 - System Information
 - IP Configuration
 - [+] DHCP Server
 - [+] TFTP Transaction
 - [-] System Event Log
 - Syslog Configuration
 - Syslog Table
 - SMTP Configuration
 - Event Configuration
 - Fault Relay Alarm
 - Time (SNTP)
 - IP Security
 - User Authentication
 - [+] Port
 - [+] Protocol
 - [+] Security
 - Factory Default
 - Save To Flash
 - Reboot

192.168.16.1
00:0F:38:03:4A:84

Status	Syslog
■ Online/Offline	Num: 6
■ Query Failure	Unread: 0
■ IP different	Last: 2009/4/22
■ Device Fault	17:17:32
* Red as Error	

View Page: Page.01

- Jan 1 07:15:45: Port.01: Link Up!
- Jan 1 07:15:45: X-Ring Topology Change!
- Jan 1 07:13:44: Port.01: Link Down!
- Jan 1 07:13:43: X-Ring Topology Change!
- Jan 1 07:04:31: X-Ring Topology Change!
- Jan 1 07:04:29: Port.01: Link Up!
- Jan 1 07:04:18: Port.01: Link Down!
- Jan 1 07:04:18: X-Ring Topology Change!
- Jan 1 07:04:16: X-Ring Topology Change!
- Jan 1 07:04:12: X-Ring Topology Change!
- Jan 1 07:03:24: X-Ring Topology Change!
- Jan 1 07:03:22: X-Ring Topology Change!
- Jan 1 07:02:16: X-Ring Topology Change!
- Jan 1 07:02:14: X-Ring Topology Change!
- Jan 1 07:02:14: X-Ring Topology Change!
- Jan 1 07:02:07: X-Ring Topology Change!
- Jan 1 07:01:50: X-Ring Topology Change!
- Jan 1 07:01:48: X-Ring Topology Change!
- Jan 1 06:28:27: System Log Server IP: 192.168.16.10
- Jan 1 06:28:27: System Log Enable!

Clear

