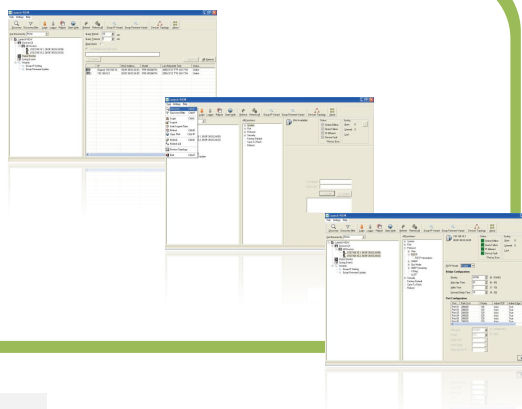


# Lantech View

Windows-base management utility

- Smart
- Powerful
- Convenient
- Useful



## OVERVIEW

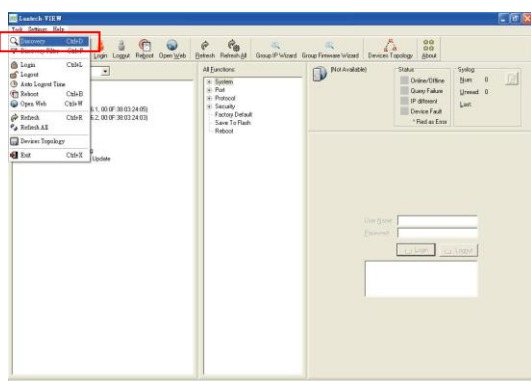
Lantech View is Windows-base powerful network management software. With its friendly and powerful interface, you can easily configure multiple switches at the same time, and monitor switches' status.

Lantech View is a smart tool, which can auto discovery devices connected to a network. With its powerful functions for switch configuration, our customers can configure multiple switches concurrently. It can monitor multiple switches status easily, providing a more convenient

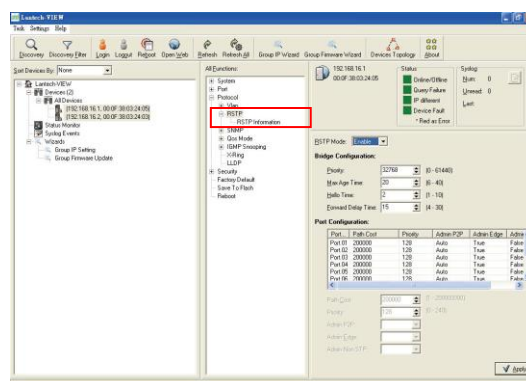
management solution. As a useful tool to maintain switches firmware and configuration, Lantech View is able to upgrade firmware and backup configure file for multiple switches at one time.

Lantech provides free bundle version for our manageable devices, by which can monitor, auto-topology-drawing and configures up to 10 Lantech Industrial switches. The optional Lantech-View Pro can map up to unlimited user with auto-layout, configuration and discovery.

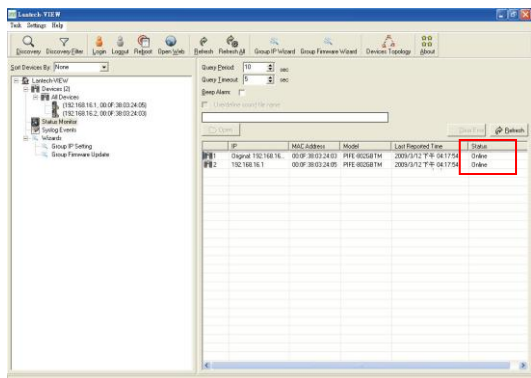
## SCREEN SHOTS



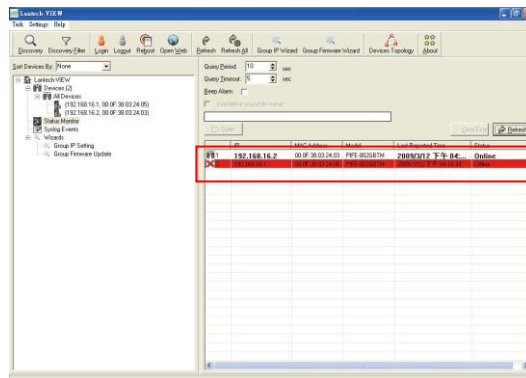
▲ Auto discovery device



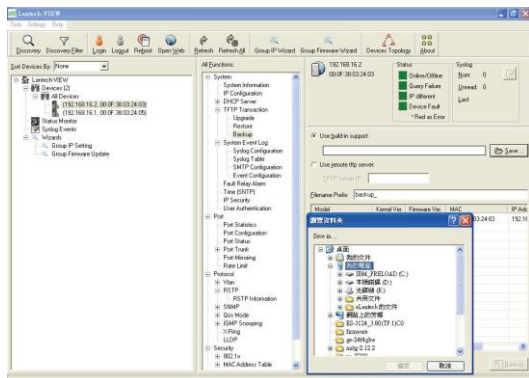
▲ Enable/Disable multiple switches function



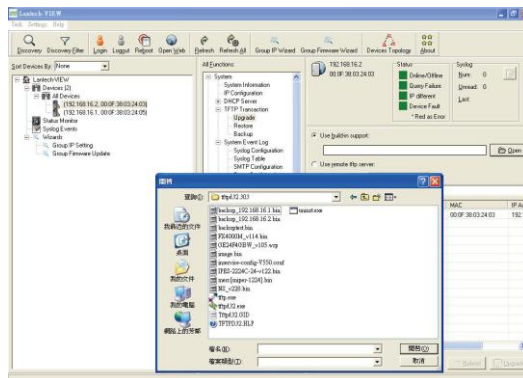
▲ Device status monitoring



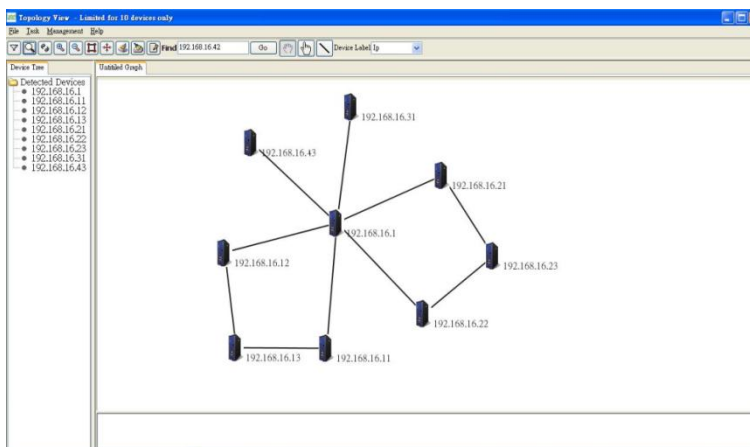
▲ Warning: device is abnormal



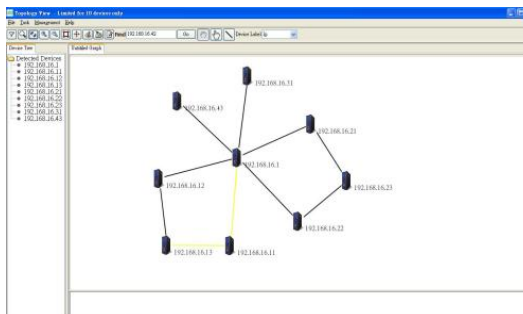
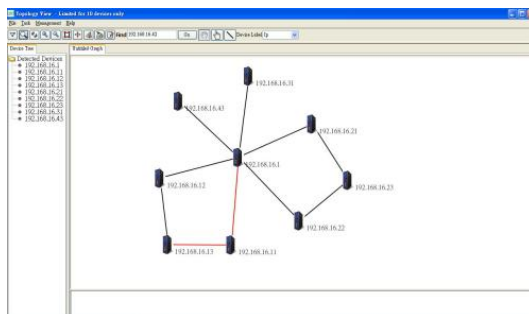
▲ Backup configuration easily by the tool



▲ Upgrade firmware easily by the tool



▲ Topology View provides an auto-topology-drawing function\*.



▲ The live status monitor function will detect connection status automatically\*.

\*Please notice that these functions only works for LLDP (Link Layer Discovery Protocol) supported switches.

**Lantech Communications Global Inc.**

www.lantech.com.tw  
info@lantech.com.tw

© 2009 Copyright Lantech Communications Global Inc. all rights reserved.  
The revise authority rights of product specifications belong to Lantech Communications Global Inc.  
Lantech may make changes to specification and product descriptions at anytime, without notice.